



MOVIE PEOPLE

CAMERA DEPARTMENT

2024

ENG

003 Contact
004 Hire Condition

007 DIGITAL CAMERA
051 LENSES
116 CAMERA ACCESSORIES
137 VIDEO
144 ON SALES



MOVIE PEOPLE

MOVIE PEOPLE S.P.A

Headquarters

Via Carlo Porta 3
20093 Cologno M.se [MI] Italy
+39 02 25 39 931
info@moviepeople.it
camera@moviepeople.it

Registered office

Via Pontaccio 19
20221 [MI] Italy

www.moviepeople.it



D-VISION MOVIE PEOPLE

D-VISION MOVIE PEOPLE S.R.L

Via R. B. Bandinelli 130
00178 Rome Italy
+39 06 79 31 2122
info@d-visionitalia.com
d-visionitalia.com

MOVIE PEOPLE

BARI

MOVIE PEOPLE BARI

Via Cassamassina Km 11.300
70010 Capurso [BA] Italy
+39 080 45 59 383
bari@moviepeople.it

HIRE CONDITIONS

The rental implies acceptance without reservation of our general rental conditions, after having read and signed the contract or delivery note for acceptance or approval.

DELIVERY

- 1 - The equipment taken over by the renter or on his behalf is considered accepted or recognized in perfect condition operation.
- 2 - The renter must communicate the date of return of the rented equipment and any subsequent and possible change of the same date.
- 3 - The equipment is delivered to the renter at the Movie People s.p.a headquarters, which issues regular delivery note, the copy of the latter will be returned to Movie People s.p.a signed by the renter or by those responsible for taking over.
- 4 - The fee of the equipment start from the day of delivery.
- 5 - The transport of the equipment is always the responsibility of the renter.

RENTAL

- 6 - The rented equipment can be used in Italy. In case of use abroad the renter agrees to ask the Movie People s.p.a a written authorization and the preparation of the related documentation.
- 7 - The renter ,when received the rented equipment, must signed an irrevocable insurance policy against damage, in favour of Movie People s.p.a, according to the value indicated by Movie People s.p.a or resulting from the inventory. The insurance must include all risks of transport by car, train, ship, plane and all risks due to damage caused by atmospheric events, accidents, etc., including the loss of the equipment.
- 8 - In case of loss, deterioration, theft, fire of the equipment, the conductor must notify Movie People s.p.a within 24 hours from the moment in which the event takes place by registered letter. The renter is responsible for the equipment up to the value indicated by the Movie People s.p.a or inventory, according to point (7). Movie People s.p.a can request the immediate compensation of the material and the payment of the relative fee at any time. If the tenant has carry out the obligations that precede the indemnity paid or due to Movie People s.p.a from insurance, the equipment will be paid or will be sold to the renter himself.
- 9 - Any failure or breakage of the material during the rental, it will be repaired by Movie People s.p.a or from the manufacturer of the equipment and debited to the tenant. The tenant undertakes not to modify, or to have it modified by third parties or not to repair, or to have the rented equipment repaired by third parties, unless otherwise agreed in writing by Movie People s.p.a.
- 10 - The tenant agrees, remaining responsible for the value of the equipment, the tenant must inform all third party creditors who act for fore closure or other executive or precautionary measure of the rented material, that the material is owned by Movie People s.p.a, communicating to it any actions taken by third parties.

11 - In the case of special equipment rental, the tenant must hire a Movie People s.p.a technician to be employed, with functions of consignee, stops any liability of the tenant himself, pursuant to Art. 2049 of the Italian Civil Code.

12 - The material provided for hire by Movie People s.p.a is prepared in accordance with current regulations and the renter who will provide for the installation and connections, also through third parties, must scrupulously observe the safety regulations for what concerns him, assuming all and full criminal responsibility, civil and fiscal. The tenant undertakes, with insurance policy or by responding personally, to refund damages to things or to people, employees or strangers, caused by accidents originating from the rented equipment or its use.

13 - No discount of fee or reduction of the duration of the rental will be allowed to the renter due to the forced immobilization of the equipment, both for reasons of stoppage of the film, both for production delay, and for any other cause.

14 - For defects or breakdowns of the rented equipment, even coming from hidden defects, the renter can not expect the pure and simple replacement of the piece and, in case of impossibility to replace without delay, the exchange with equivalent material, without right no compensation for failure to use the rented property.

15 - Movie People s.p.a assumes no responsibility for delayed deliveries (operating defects or total or partial claims occurring during shooting), or that cause the stop of shooting, being the rental rates independent of the value or the realization of the film produced with the help of the rented equipment. Movie People s.p.a excludes any warranty or liability for any direct or indirect damage suffered by the renter or third party, as a result of the inefficient operation of the rented equipment (damage to the equipment, missing or delayed shooting, etc.)

RESTITUTION

16 - The material must be returned in efficient conditions, in order and in perfect condition.

17 - The material must be returned to the Movie People s.p.a headquarters.

18 - The freight ends on the day of delivery.

19 - Partial deliveries of parts of the same appliance are not accepted; the rental days will be calculated until full and complete return of the material.

20 - In the event that the equipment is damaged again, the tenant must pay compensation equivalent to the rental price for the duration of the repair work.

21 - The material must be returned during the opening hours of the warehouse.

22 - Any delay in the return of the material is considered as an extension of the rental itself, except for compensation for major damage, pursuant to Art. 1591 of the Italian Civil Code.

23 - Each item missing when the equipment returns will be replaced by Movie People s.p.a and charged to the customer, at the price of the new market in Italy.

24 - If the return of the rented equipment takes place within 12 hours, it is considered to have ceased on the evening of the previous day.

PAYMENT

25 - Movie People s.p.a applies the prices indicated in its price list.

26 - Payment, unless otherwise indicated, means cash.

27 - Invoices are issued weekly; we do not accept claims on invoices after 5 days from their issue.

28 - The exclusive court of jurisdiction is that of Milan.

29 - In case of use, the tax charges are due to the tenant.

DIGITAL CAMERA

7



DIGITAL CAMERA – PL MOUNT – ARRI

ALEXA 35

DATASHEET

Sensor

Super35 4.6K (4608 x 3164) 4:3 sensor
27.99 x 19.22 mm (33.96 mm Ø), 6.075 µm
photosite pitch.

Sensor pixel

EI 160 to 6400, with Enhanced Sensitivity
2560 - 6400.

Dynamic range

17+ Stop





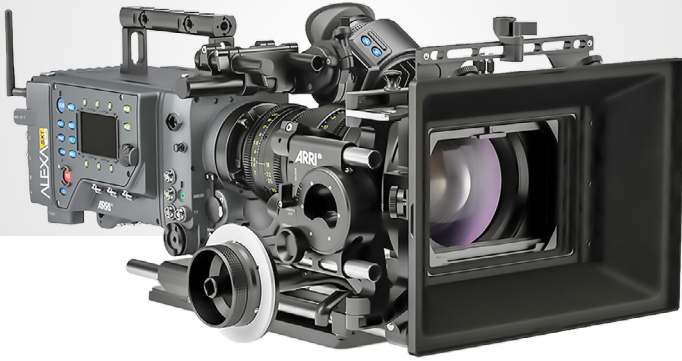
DIGITAL CAMERA – PL MOUNT – ARRI

ALEXA MINI LF

DATASHEET

Sensor	Large Format ARRI ALEV III [A2X] CMOS w Bayer pattern colour filter
Sensor pixel	4448 x 3096
Sensor dimension	36.70 x 25.54 mm [diagonal: 44.71 mm]
Dynamic range	14+ Stop





DIGITAL CAMERA – PL MOUNT – ARRI

ALEXA SXT PLUS

DATASHEET

Sensor	35mm ALEV III CMOS w Bayer pattern colour filter
Sensor pixel	3414 x 2198
Sensor dimension	28.25 x 18.17 mm [diagonal: 33.59 mm]
Dynamic range	14+ Stop
Optional	Codex Capture Drives 1T SXR Codex Card Reader Thunderbolt





DIGITAL CAMERA – PL MOUNT – ARRI

ALEXA MINI

DATASHEET

Sensor	35mm ARRI ALEV III CMOS w Bayer pattern colour filter
Sensor pixel	3424 x 2202
Sensor dimension	28.25 x 18.17 mm [diagonal: 33.59 mm]
Dynamic range	14+ Stop





DIGITAL CAMERA – PL MOUNT – ARRI

ALEXA 4:3 XT PLUS

DATASHEET

Sensor	35mm ARRI ALEV III CMOS w Bayer pattern colour filter
Sensor pixel	3414 x 2198
Dynamic range	14+ Stop
Optional	Codex Capture Drives 1T SXR Codex Card Reader Thunderbolt



DIGITAL CAMERA – PL MOUNT – ARRI

ALEXA STUDIO 4:3 XR PLUS

DATASHEET

Sensor	35mm ARRI ALEV III CMOS
Sensor pixel	2880 x 1620
Sensor dimension	28.25 x 18.17 mm [diagonal: 33.59 mm]
Dynamic range	14+ Stop



DIGITAL CAMERA – PL MOUNT – ARRI
AMIRA UHD 200 FPS

DATASHEET

Sensor	35mm ARRI ALEV III CMOS w Bayer pattern colour filter
Sensor pixel	3154 x 1764
Sensor dimension	28.17x18.13 mm
Dynamic range	14+ Stop





DIGITAL CAMERA – PL MOUNT

ARRI ALEXA M XT

DATASHEET

Sensor	35mm ALEV III CMOS con Dual Gain Architecture [DGA] w Bayer pattern colour filter
Sensor pixel	3154 x 1764
Dynamic range	14+ Stop



DIGITAL CAMERA – PL MOUNT – ARRI

ALEXA 16:9 PLUS



DIGITAL CAMERA – PL MOUNT – ARRI

ALEXA 16:9 EV



DIGITAL CAMERA – PL MOUNT – SONY

VENICE 2 8K

DATASHEET

Sensor	Full-Frame CMOS
ISO Sensitivity	VENICE 2 with 8.6K image sensor (MPC-3628): ISO800, ISO3200 (Dual Base ISO)
Imaging Device Pixel Count	VENICE 2 with 8.6K image sensor (MPC-3628): 50.0 M (Total)
Dynamic range	VENICE 2 with 8.6K image sensor (MPC-3628): 16 Stop
Optional	Rialto 2 (cable 2,9 mt or 12mt)
Features	Full Frame / Anamorphic / HFR





DIGITAL CAMERA – PL MOUNT – SONY

VENICE

DATASHEET

Sensor	Full-Frame CMOS
Sensor pixel	24.7M [total], 24.4M [effective]
Sensor dimension	36.2 x 24.1 mm [diagonal: 43.5 mm]
Dynamic range	15+ Stop
Optional	R7 Recorder / Cable RIALTO
Licenses included	Full Frame / Anamorphic / HFR



*w Cable RIALTO



DIGITAL CAMERA – PL MOUNT – SONY

PMW-F55

DATASHEET

Sensor	Super 35mm CMOS
Sensor pixel	11.6 MP [total], 8.9 MP [effective]
Dynamic range	14 Stop
Optional	R5 Recorder



DIGITAL CAMERA ACCESSORIES

SEMOTE SERM-5

DATASHEET

Camera controlled

Sony Venice
Visual Research Phantom 4K

Useful to

Multiple Camera Control
Camera Arrays
Camera Rigging
Aerial Filming
Underwater/Splash Housings
Crane Shots



DIGITAL CAMERA – PL MOUNT – VISION RESEARCH
PHANTOM FLEX 4K

DATASHEET

Sensor	CMOS 4K
Sensor pixel	4096 x 2304
Sensor dimension	27.6 x 15.5 mm
Dynamic range	10 Stop



CINESTATION PHANTOM
Per Phantom Flex 4K



CINEMAG PHANTOM
256 GB



DIGITAL CAMERA – PL MOUNT – VISION RESEARCH

PHANTOM FLEX 2K

DATASHEET

Sensor	FLEX 2K
Sensor pixel	2560x1440, 1080
Sensor dimension	25.6 x 16 mm
Dynamic range	10 Stop



CINESTATION PHANTOM
Phantom Flex 2K



CINEMAG PHANTOM
256 GB



DIGITAL CAMERA – PL MOUNT – RED

V-RAPTOR 8K VV

DATASHEET

Sensor	V-RAPTOR™ 8K VV 35.4 Megapixel CMOS
Sensor pixel	8192 × 4320
Sensor dimension	40.96 mm x 21.60 mm (Diagonal: 46.31 mm)
Dynamic range	17+ Stop





DIGITAL CAMERA – PL MOUNT – RED

RANGER MONSTRO 8K VV

DATASHEET

Sensor	MONSTRO 35.4 Megapixel CMOS
Sensor pixel	8192 × 4320
Sensor dimension	40.96 mm × 21.60 mm [diagonal: 46.31 mm]
Dynamic range	17+ Stop



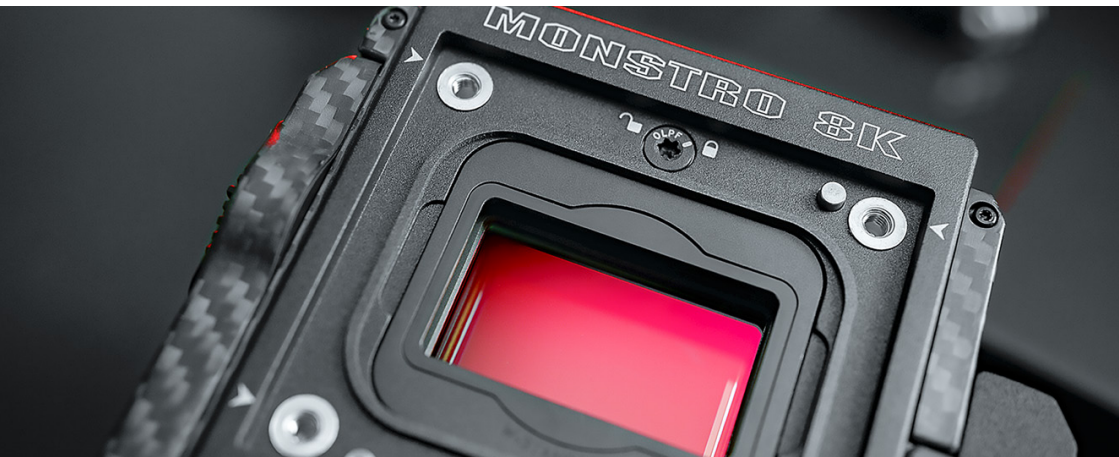


DIGITAL CAMERA – PL MOUNT – RED

WEAPON MONSTRO 8K VV

DATASHEET

Sensor	MONSTRO 35.4 Megapixel CMOS
Sensor pixel	8192 x 4320
Sensor dimension	40.96 mm x 21.60 mm [diagonal: 46.31 mm]
Dynamic range	17+ Stop





DIGITAL CAMERA – PL MOUNT – RED

WEAPON HELIUM 8K S35

DATASHEET

Sensor	HELIUM 35.4 Megapixel CMOS
Sensor pixel	8192 × 4320
Sensor dimension	29.90 mm x 15.77 mm [diagonal: 33.80 mm]
Dynamic range	16.5+ Stop





DIGITAL CAMERA – PL MOUNT – RED

GEMINI 5K

DATASHEET

Sensor	GEMINI 15.4 Megapixel Dual Sensitivity CMOS
Sensor pixel	5120 × 3000
Sensor dimension	30.72 mm x 18.0 mm [diagonal: 35.61 mm]
Dynamic range	16.5+ Stop





DIGITAL CAMERA – PL MOUNT – RED

EPIC DRAGON 6K

DATASHEET

Sensor	RED DRAGON 19.4 Megapixel CMOS
Sensor pixel	6144 x 3160
Sensor dimension	30.7 mm x 15.8 mm [diagonal: 34.5 mm]
Dynamic range	16.5+ Stop



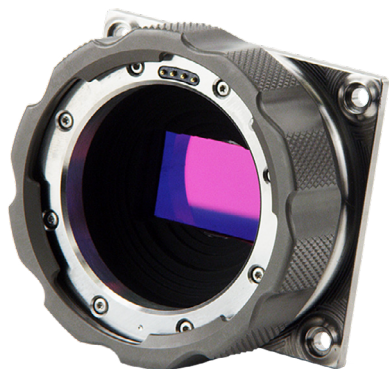
DIGITAL CAMERA – PL MOUNT – RED

KOMODO 6K

DATASHEET

Sensor	KOMODO™ 19.9 Megapixel Super 35 mm Global Shutter Cmos
Sensor pixel	6144 X 3240
Sensor dimension	27.03 mm x 14.26 mm [diagonal: 30.56 mm]
Dynamic range	16+ Stop
Optional	EF Mount

MOTION MOUNT / REDLINK

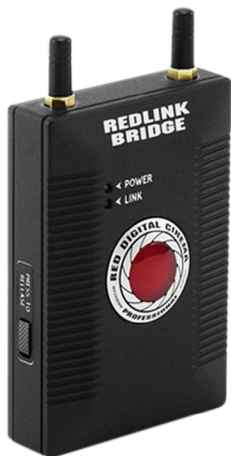


RED MOTION MOUNT

RED Weapon Helium 8K S35

RED Gemini 5K

RED Epic Dragon 6K



RED REDLINK BRIDGE



DIGITAL CAMERA – PL MOUNT – SONY

PXW-FX9 4K

DATASHEET

Sensor	Full-Frame CMOS
Sensor pixel	3840 x 2160
Sensor dimension	35.7 x 18.8 mm
Dynamic range	15 Stop



DIGITAL CAMERA – PL MOUNT – SONY
CINEMA LINE FX6 4K

DATASHEET

Sensor	Full-Frame CMOS
Pixel	12,9 megapixel
Sensibility	ISO 800/12800
LCD	8,8 cm, approximately 2,76 of million point



DIGITAL CAMERA – PL MOUNT – SONY

PXW-FS7 4K



DIGITAL CAMERA – PL MOUNT – SONY

PXW-FS5



DIGITAL CAMERA – PL MOUNT – CANON

EOS C500 MK II

DATASHEET

Sensor	Full-Frame CMOS
--------	-----------------

Sensor pixel	6062 x 3432
--------------	-------------

Sensor dimension	38.1 x 20.1 mm
------------------	----------------

Dynamic range	15+ Stop
---------------	----------



DIGITAL CAMERA – PL/EF MOUNT – CANON
EOS C300 MK III

DATASHEET

Sensor	Super 35 mm CMOS
Sensor pixel	4206 x 2280
Dynamic range	16 Stop



DIGITAL CAMERA – PL/EF MOUNT – CANON

EOS C300 MK II 4K

DATASHEET

Sensor	Super 35 mm CMOS
Sensor pixel	4096 x 2160
Sensor dimension	24.6 x 13.8 mm
Dynamic range	15 Stop



DIGITAL CAMERA – PL MOUNT – Z CAM
E2-F6 FULL FRAME 6K

DATASHEET

Sensor	Full Frame CMOS 6K
Sensor pixel	6064 x 4040
Sensor dimension	37.09 x 24.75 mm
Dynamic range	15 Stop

BLACK MAGIC



BLACK MAGIC URSA MINI 4.6K G2

Sensor	4.6K Super 35 mm CMOS
Sensor dimension	25,34 mm x 14,25 mm
Dynamic range	15 Stop
Mount	EF / PL



BLACK MAGIC POCKET CINEMA CAMERA 6K PRO

Sensor	6K CMOS
Sensor dimension	18.96 mm x 10 mm [4/3]
Dynamic range	13 Stop
Mount	EF / PL



BLACK MAGIC POCKET CINEMA CAMERA 4K

Sensor	4K CMOS
Sensor dimension	18.96 mm x 10 mm [4/3]
Dynamic range	13 Stop



BLACK MAGIC MICRO CINEMA

Sensor	Super 16mm
Sensor dimension	12.48 x 7.02 mm
Dynamic range	13 Stop

BLACK MAGIC



BLACK MAGIC MICRO STUDIO

Sensor	Super 16mm
Sensor dimension	12.48 x 7.02 mm
Dynamic range	13 Stop



BLACK MAGIC PRODUCTION CAMERA 4K

Sensor	4K Super-35mm CMOS
Sensor dimension	21.12 x 11.88mm
Dynamic range	12 Stop



BLACK MAGIC POCKET CINEMA

Sensor	Super 16mm
Sensor dimension	12.48 x 7.02 mm
Dynamic range	13 Stop

DIGITAL CAMERA – PL / EF MOUNT

MIRRORLESS / REFLEX



SONY FX3



SONY A7S III



CANON C70



SONY A7S II



PANASONIC LUMIX GH-5

DIGITAL CAMERA – EF MOUNT

DIGITAL CAMERA EF

Canon EOS C300

Canon ME200S-SH

Canon EOS 5D MARK III

Canon EOS 5D Mark II

Canon EOS 7D PL mount

Sony a7S

Sony NEX-FS700E

BROADCAST CAMERA – B4 MOUNT / VARIOUS

BROADCAST CAMERA



PANASONIC AG-HPX2700E



PANASONIC AG-HPX255EJ



PANASONIC AG-HPX500E



PANASONIC AG-HPX250PJ

BROADCAST CAMERA



PANASONIC AJ-PX270



PANASONIC AG-HPX171E



PANASONIC AG-HVX200E



PANASONIC DVX 100B



SONY HD DIGITALE HVR-Z7E



SONY HD HVR-Z5E



SONY DVCAM DSR-PD170P



CANON XF100



Atom one mini



Atom one 4k mini 7



Atom one 4k mini 11



Atom one 4k mini 16



Underwater Housing

MICRO CAMERA – DREAM CHIP

ATOM ONE



DREAM CHIP ATOM ONE MINI

Resolution	Full HD 1920 x 1080
Sensor type	1/2.5"
Mount	S Mount (M12)
Weight	45 g
Dimension	30 x 30 x 31 mm
Optional	CyanView RCC



DREAM CHIP ATOM ONE 4K MINI 7

Resolution	UHD 3864 x 2196
Sensor type	1/2.5"
Mount	C Mount / CS Mount / S Mount
Weight	120 g
Dimension	36 x 36 x 79 mm
Optional	CyanView RCC Underwater Housing

ATOM ONE



DREAM CHIP ATOM ONE 4K MINI 11

Resolution	4K 4096 x 2160
Sensor type	2/3"
Mount	C Mount / CS Mount
Weight	120 g
Dimension	36 x 36 x 79 mm
Optional	CyanView RCC



DREAM CHIP ATOM ONE 4K MINI 16

Resolution	4K 4096 x 2160
Sensor type	1"
Mount	C Mount / CS Mount
Weight	120 g
Dimension	36 x 36 x 79 mm
Optional	CyanView RCC



DREAM CHIP UW HOUSING

Camera	Atom one 4k mini 7
Deep	5 m
Weight	400 g
Dimension	48 x 48 x 185 mm

CONTROLLO CAMERE REMOTO

**CYAN VIEW
REMOTE CAMERA
CONTROL**
Wireless



Camere Atom + CyanView Rio → CyanView GWY + CyanView RCP Camera Control Unit

**CYAN VIEW
REMOTE CAMERA
CONTROL**
Via Cable



Camere Atom + CyanView C10 → CyanView GWY + CyanView RCP Camera Control Unit

GO PRO



GO PRO MAX



GO PRO HERO 11



INSTA 360 X3



INSTA 360 GO 2



SONY HD HXR-MC1P



PANASONIC AG-HMR10EU

SPECIAL CAMERA / PANASONIC

PTZ CAMERA



Resolution	4K
Sensor	1-Type 4K MOS×1
Lens	Motorized Optical Zoom 20x F2.8 to F4.5
Focus	Manual / Automatic
PAN	±175°
TILT	-30° to 210°
PAN/TILT speed	Min 0.08°/s Max 60°/s Max 180°/s in HS mode
Weight	4 kg
Dimension [HxWxD]	267 x 213 x 219 mm

SPECIAL CAMERA / SONY

ILME-FR7



Resolution	4K
Sensor	35 mm Full Frame Sensor
Lens	Interchangeable Lens camera E-mount
Focus	Manual / Automatic
PAN	±170°
TILT	-30° to 195°
PAN/TILT speed	Min 0.02°/s Max 60°/s
Weight	4,6 kg
Dimension [HxWxD]	227 x 289 x 233 mm
Recording Support	SD Card, CFexpress

Q-BALL CAMERA



Q-BALL

Sensor	1/3" 2M pixel CMOS
Lens	10x zoom – 5.1 mm – 51 mm 5.1° – 51° angle of view
Format	720p/1080i – 50/59.94Hz 625/50 [PAL] 525/59.94hz [NTSC]
Ratio	16:9 / 4:3
Shooter speed	½ to 1/1000sec.
Focus	Manual / Automatic
Pan/Tilt speed	360° in 30–4 s
Weight	1,3 kg
Dimension	ø 115 mm / h 210 mm

3D CAMERA



PANASONIC AG-3DP1D



3D PANASONIC AG-3DA1

FILM CAMERA

35 MM

Arricam studio 4 Perf

Arricam studio 3 Perf

Arricam studio 2 Perf

Arricam Lite 4 Perf

Arricam Lite 3 Perf

Arricam Lite 2 Perf

Arriflex 535B 4 Perf

Arriflex 535B 3 Perf

Arriflex 435 Xtreme 4 Perf

Arriflex 235 4 Perf

Aaton 35 III



FILM CAMERA

16 MM

Arriflex 416 HS

Arriflex SR3

Aaton A-MINIMA Super 16



Arriflex 16 ST



8 MM

CANON 1014 XL-S



LENSES

51



ANAMORPHIC / FF LENSES – PL MOUNT – COOKE

ANAMORPHIC/i FULL FRAME PLUS SPECIAL FLAIR

32 mm T2.3 SF

40 mm T2.3 SF

50 mm T2.3 SF

75 mm T2.3 SF

85 mm T2.8 SF Macro

100 mm T2.3 SF

135 mm T2.3 SF

135 mm T2.3 SF

180 mm T2.9 SF



FULL FRAME LENSES – PL MOUNT – COOKE

S8/i FULL FRAME

25 mm T1.4

32 mm T1.4

40 mm T1.4

50 mm T1.4

75 mm T1.4

100 mm T1.4

135 mm T1.4



FULL FRAME LENSES – PL MOUNT – TRIBE7

BLACKWING7 T-TUNING

20.7mm T1.9

23.7mm T1.9

27mm T1.9

37mm T1.9

47mm T1.9

57mm T1.9

77 mm T1.9

107mm T1.9

137mm T1.9





FULL FRAME LENSES – PL MOUNT – TRIBE7

BLACKWING7 SKIN TUNING

27mm T1.9

37mm T1.9

47mm T1.9

57mm T1.9

77 mm T1.9

107mm T1.9

137 mm T1.9



FULL FRAME LENSES - LOMOGRAPHY

PETZVALUX LENS SET

27mm T1.7

38mm T1.7

55mm T1.7

80mm T1.9

120mm T1.9





FULL FRAME LENSES – PL MOUNT – PETZVAL

PETZVAL / TLS REHOUSED

Petzval 58 mm T2.1 – TLS Prime

Petzval 85 mm T2.1 – TLS Prime



FULL FRAME LENSES – PL MOUNT

KOWA-R REHOUSED BY TLS & ANCIENT OPTICS

19mm T4.1

28mm T3.6

35mm T2.9

50mm T1.9

85mm T2.9

100mm T3.6

135mm T3.9

200mm T4.1



FULL FRAME LENSES – LPL MOUNT

MAMIYA 645 TLS REHOUSED

17mm T3.3

25mm T2.8

32mm T2.3

39mm T2.3

50mm T2.3

57mm T1.6

78mm T2.3

107mm T2.2



FULL FRAME LENSES – LPL MOUNT – ARRI

SIGNATURE

12 mm T1.8

15 mm T1.8

18 mm T1.8

21 mm T1.8

25 mm T1.8

29 mm T1.8

35 mm T1.8

40 mm T1.8

47 mm T1.8

58 mm T1.8

75 mm T1.8

95 mm T1.8

125 mm T1.8

150 mm T1.8

200 mm T2.5

280 mm T2.8



FULL FRAME LENSES – PL MOUNT – LEITZ

LEITZ PRIME

18 mm T1.8

21 mm T1.8

25 mm T1.8

29 mm T1.8

35 mm T1.8

40 mm T1.8

50 mm T1.8

65 mm T1.8

75 mm T1.8

100 mm T1.8

135 mm T1.8

180 mm T2

350 mm T3.6



FULL FRAME LENSES – PL MOUNT – COOKE

S7/i FULL FRAME PLUS

• 25 – 32 – 40 – 50 – 75 – 100 – 135 – T2

16 mm T2

18 mm T2

21 mm T2

27 mm T2

65 mm T2

180 mm T2

300 mm T3.3



FULL FRAME LENSES – PL MOUNT – COOKE

COOKE 60mm T2.5 MACRO



FULL FRAME LENSES – PL MOUNT – COOKE

COOKE 90mm T2.5 MACRO



FULL FRAME LENSES – PL MOUNT – COOKE

COOKE 150mm T2.5 MACRO



FULL FRAME LENSES – PL MOUNT – ZEISS

SUPREME PRIME

• 18 – 25 – 29 – 35 – 40 – 50 – 85 – 100 – 135 – 200 – T1.5

15 mm T1.8

21 mm T1.5

65 mm T1.5

150 mm T1.8





FULL FRAME LENSES – PL MOUNT – ZEISS

SUPREME PRIME RADIANCE

• 21 – 25 – 29 – 35 – 50 – 85 – 100 – T1.5

18 mm T1.5

40 mm T1.5

65 mm T1.5

135 mm T1.5





FULL FRAME LENSES – PL MOUNT – LEITZ

THALIA

- 24 T3.6 Macro – 30 T2.9 – 35 T2.6 – 45 T2.9 – 55 T2.8 Macro – 70 T2.6 – 100 T2.2

120 mm T2.6 Macro

180 mm T3.6





FULL FRAME LENSES – PL MOUNT – CANON

K-35 / TLS REHOUSED

24 – 35 – 50 – 85 – T1.5/1.3 – TLS Rehoused

Canon FD 14 mm T2.8 – TLS Rehoused

Canon FD 15 mm T3 Fisheye - TLS Rehoused

Canon FD-X 18 mm T1.6 – TLS Rehoused

Canon FD 20 mm T2.8 – TLS Rehoused

Canon FD 28 mm T2 – TLS Rehoused

Canon Y/K35 45 mm T1.5 – TLS Rehoused

Canon FD 55 mm T1.3 Aspherical – TLS Rehoused

Canon FD-X 70 mm T1.3 - TLS Rehoused

Canon FD 100 mm T2 – TLS Rehoused

Canon FD 135 mm T2 – TLS Rehoused

Canon FD 200 mm T2.8 – TLS Rehoused

Canon FD 200 mm T2.9 – G.L Optics Rehoused*





FULL FRAME LENSES – PL MOUNT – COOKE

PANCHRO/i CLASSIC FF FULL FRAME

18 mm T2.2

21 mm T2.2.

25 mm T2.2

27 mm T2.2

32 mm T2.2

40 mm T2.2

50 mm T2.2

65 mm MACRO T2.4

75 mm T2.2

100 mm T2.8

135 mm T2.8

152 mm T3



FULL FRAME LENSES – M MOUNT – LEITZ

M 0.8

21 mm f/1.4

24 mm f/1.4

28 mm f/1.4

35 mm f/1.4

50 mm NOCTILUX f/0.95

75 mm f/2.0

90 mm f/2.0



FULL FRAME LENSES – LPL MOUNT – CANON

DREAM LENS 50mm T0.95 TLS REHOUSED



FULL FRAME LENSES – PL MOUNT – LAOWA

ZERO DISTORTION 12mm T2.9



FULL FRAME LENSES / MACRO – PL MOUNT – IBE OPTICS

RAPTOR

• 60 – 100 – 150 – 180 – T2.9

IBE Optics Velociter x0.8 [100 – 150 – 180]



FULL FRAME LENSES / MACRO – PL MOUNT – LAOWA

100mm T2.9 2X MACRO APO



FULL FRAME LENSES / MACRO – PL MOUNT – TOKINA

ATX 100mm T2.9



FULL FRAME ZOOM LENSES – LPL MOUNT – ARRI

SIGNATURE ZOOM



SIGNATURE ZOOM

16 - 32 mm T2.8



SIGNATURE ZOOM

24 - 75 mm T2.8

FULL FRAME ZOOM LENSES – LPL MOUNT – ARRI

SIGNATURE ZOOM



SIGNATURE ZOOM 45-135 mm T2.8



SIGNATURE ZOOM 65 - 300 mm T2.8

WITH SIGNATURE **EXTENDER 1.7X**



FULL FRAME ZOOM LENSES – PL MOUNT – ANGENIEUX

OPTIMO ULTRA 12x

FF/VV – S35 – U35





FULL FRAME ZOOM LENSES – PL MOUNT – ANGENIEUX

OPTIMO ULTRA COMPACT FF/VV – U35

FF/VV 21-56mm T2.9

U35 16-42mm T2.2



FULL FRAME ZOOM LENSES – PL MOUNT – ANGENIEUX

OPTIMO ULTRA COMPACT FF/VV – U35

FF/VV 37-102 T2.9

U35 28-76 T2.2





FULL FRAME ZOOM LENSES – PL MOUNT – LEITZ

LEITZ ZOOM 25-75mm T2.8





FULL FRAME ZOOM LENSES – PL MOUNT – FUJINON
PREMISTA 28-100mm T2.9



EZ-1 / EZ-2



ANGENIEUX EZ-1

FF/VV 45-135 T3 / S35 30-90 T2



ANGENIEUX EZ-2

FF/VV 22-60 T3 / S35 15-40 T2

OPTICAL EXTENDER



IBE OPTICS LPL X2
Vista Vision Optical Extender



**SIGNATURE ZOOM
EXTENDER LPL 1.7X**
Arri Signature Optical Extender



IBE OPTICS PL S35
Full Frame Optical Extender



IBE OPTICS PL X2
Vista Vision Optical Extender



FUJIFILM OPTIMAG 1.7X PL S35
Full Frame Optical Extender



ATLAS 1.6X LF
Full Frame Optical Extender



ANAMORPHIC LENSES – PL MOUNT – VANTAGE

HAWK V-LITE ANAMORPHIC

28 mm T2.2

35 mm T2.2

45 mm T2.2

55 mm T2.2

65 mm T2.2

80 mm T2.2

110 mm T3

140 mm T3.5



ANAMORPHIC LENSES – PL MOUNT – COOKE

ANAMORPHIC/i PRIME LENSES SPECIAL FLAIR

25 mm T2.3 SF

32 mm T2.3 SF

45 mm T2.3 SF

50 mm T2.3 SF

65 mm T2.6 SF Macro

75 mm T2.3 SF

100 mm T2.3 SF

135 mm T2.3 SF

180 mm T2.9 SF



ANAMORPHIC LENSES – PL MOUNT – COOKE

ANAMORPHIC/i PRIME LENSES

25 mm T2.3

32 mm T2.3

45 mm T2.3

50 mm T2.3

65 mm T2.6 Macro

75 mm T2.3

100 mm T2.3

135 mm T2.3

180 mm T2.8

300 mm T3.5



ANAMORPHIC LENSES – PL MOUNT – ZEISS

MASTER ANAMORPHIC PRIME LENSES

28 mm T1.9

35 mm T1.9

40 mm T1.9

50 mm T1.9

60 mm T1.9

75 mm T1.9

100 mm T1.9

135 mm T1.9

180 mm T2.8

ARRI ZEISS MASTER ANAMORPHIC FLARE SET

Front / Rear [28 - 35 - 40 - 50 - 60 - 75 - 100 - 135 - 180]



ANAMORPHIC LENSES – PL MOUNT – JDC

XTAL XPRES

35 mm T2

50 mm T2

75 mm T2.3

100 mm T2.8

135 mm T2



ANAMORPHIC LENSES – PL MOUNT – ATLAS

ORION PRIME LENSES

21 mm T2

25 mm T2

32 mm T2

40 mm T2

50 mm T2

65 mm T2

80 mm T2

100 mm T2





ANAMORPHIC LENSES – DL/RF/E MOUNT – LAOWA
NANOMORPH SILVER

27mm T2.8

35mm T2.4

50mm T2.4



OPTICAL EXTENDER



IBE OPTICS PL X2
Optical Extender



ARRI ALURA PL 2X
LDS Extender



ARRI ALURA PL 1.4X
LDS Expander

OPTIMO



ANGENIEUX OPTIMO
44-440 A2S T4.5



ANGENIEUX OPTIMO
56-152 T4.0



ANGENIEUX OPTIMO
30-72 AS2 T4.0

SUMMILUX / SUMMICRON



LEITZ SUMMILUX-C T1.4

• 18 – 21 – 25 – 32 – 40 – 50 – 75 – 100

16 mm T1.4

29 mm T1.4

65 mm T1.4

135 mm T1.4



LEITZ SUMMICRON-C T2

• 18 – 25 – 35 – 50 – 75 – 100

15 mm T2

21 mm T2

29 mm T2

40 mm T2

135 mm T1.4

S5 / S4



COOKE S5/i PRIME LENSES T1.4

• 18 - 25 - 32 - 40 - 50 - 65 - 75 - 100

135 mm T1.4



COOKE S4/i PRIME LENSES T2

• 18 - 25 - 32 - 40 - 50 - 75 - 100

12 mm T2

14 mm T2

16 mm T2

21 mm T2

27 mm T2

35 mm T2

65 mm T2

135 mm T2

150 mm T2

180 mm T2

COOKE S4/i T2 UNCOATED FRONT / REAR

• 14 - 18 - 25 - 32 - 40 - 50 - 75 - 100 - 135

MASTER PRIME



ARRI ZEISS MASTER PRIME T1.3

• 18 – 25 – 32 – 40 – 50 – 75 – 100

12 mm T1.3

14 mm T1.3

16 mm T1.3

21 mm T1.3

27 mm T1.3

35 mm T1.3

65 mm T1.3

135 mm T1.3

150 mm T1.3

ULTRA PRIME



ARRI ZEISS ULTRA PRIME T1.9

• 16 – 20 – 24 – 32 – 40 – 50 – 85 – 100

8 mm T2.8

10 mm T2

12 mm T1.9

14 mm T1.9

28 mm T1.9

65 mm T1.9

135 mm T1.9

180 mm T1.9

K-35 / TLS REHOUSED



Canon K35 70mm T1.3

CANON K-35 - TLS REHOUSED T1.5/1.3

• 18 - 24 - 35 - 50 - 85

Canon FD 10 mm T2.8 - TLS

Canon FD 14 mm T2.8 - TLS

Canon FD 15mm T3 Fisheye - TLS

Canon FD 20 mm T2.8 - TLS

Canon FD 28 mm T2 - TLS

Canon Y/K-35 45 mm T1.5 - TLS

Canon FD 55 mm T1.3 Aspherical - TLS

Canon FD-X 70 mm T1.3 - TLS

Canon FD 100 mm T2 - TLS

Canon FD 135 mm T2 - TLS

Canon FD 200 mm T2.8 - TLS

Canon FD 200 mm T2.9 - G.L Optics

ZOOM CANON K-35 MACRO LENS K5X25

25-120mm T2.8



PANCHRO



COOKE PANCHRO/i CLASSIC T2.2

• 18 - 25 - 32 - 40 - 50 - 65 - 75 - 100

21 mm T2.2

27 mm T2.2

65 mm MACRO T2.4

135 mm T2.8

152 mm T3



COOKE SPEED S2/S3 PANCHRO T2.3 TLS REHOUSED

• 18 - 25 - 32 - 40 - 50 - 75 - 100



COOKE SPEED S2/S3 PANCHRO T2.3 P+S TECHNIK REHOUSED

• 18 - 25 - 32 - 40 - 50 - 75 - 100

COOKE SPEED S2/S3 PANCHRO T2.3 CENTURY 2000

• 18 - 25 - 32 - 40 - 50 - 75 - 100

LENSES SUPER 35

LEITZ T2.3

▪ 19 – 24 – 35 – 50 – 60 – 80 – 100 – 135

15 mm T3.5

180 mm T2.3

ZEISS PLANAR - T2.1

▪ 20 – 24 – 32 – 40 – 50 – 85 – 100 – T2.1

10 mm T2.1

12 mm T2.1

16 mm T2.1

28 mm T2.1

135 mm T2.1

180 mm T2.1

ZEISS SUPER SPEED MK III T1.3

▪ 18 – 25 – 35 – 50 – 85 – T1.3

65 mm T1.3

ZEISS SUPER SPEED MK I T1.3

▪ 18 – 25 – 35 – 50 – 85

ZEISS B-SPEED T1.4

▪ 18 – 25 – 35 – 50 – 85

SUPER 35 / MACRO LENSES – PL MOUNT – ARRI ZEISS

MASTER MACRO 100mm T2



SUPER 35 / MACRO LENSES – PL MOUNT

MACRO LENSES

ARRI ZEISS MACRO T2.1

• 16 – 24 – 32 – 40 – 50

100 mm T3

200 mm T4.3

60 mm T3 Planar

CANON FD MACRO 50 MM T3.5

ZEISS COMPACT PRIME CP.2 MACRO 50 MM T2.1 PL / EF MOUNT



FISHEYE LENSES – PL MOUNT – NIKKOR

CENTURY 8mm T3.3



FISHEYE LENSES – PL MOUNT – NIKKOR

OPPENHEIMER 8mm T3.2

SPECIAL LENSES



CLAIRMONT SWING/SHIFT T2.8

• 18 – 24 – 35 – 55 – 75 – 105



SET ARRI SHIFT/TILT T2.8

• 18 – 24 – 35 – 55 – 75 – 105



LENSBABY MOVIE MARKER'S KIT PL / EF MOUNT

Sweet 35

Sweet 50

Edge 35

Edge 50

Edge 80

Twist 60

Obscura 50

Zeiss Variable Prime Lenses VP1 16-30 T2.2

Zeiss Variable Prime Lenses VP2 29-60 T2.2

Zeiss Variable Prime Lenses VP1 55-105 T2.2

SPECIAL LENSES



P+S TECHNIK
SKATER SCOPE SYSTEM T5.6



OPTEX
BORESCOPE - PERISCOPE T3.2/T5.4

10 - 14 - 24 - 35 - 50 - 80 - 100 - 125



P+S TECHNIK
T-REX SUPERSCOPE SYSTEM T7.1

Leitz Zoom
5.5-20 / 17-34 / 32-70 / 55-112

Zeiss Zoom
5.5-20 / 18-35 / 32-70 / 60-120

SPECIAL LENSES



LAOWA 24MM T8 2X PRO2BE

- DIRECT VIEW, 35° VIEW, PERISCOPE VIEW
- WATERPROOF LENSES FOR 36,6 CM
- 2X MAGNIFICATION
- MAX APERTURE T8



LAOWA MACRO PERIPROBE
24mm T14



LAOWA MACRO PROBE
24 mm T14

SUPERMICRO APO – FULL FRAME - PL MOUNT

LAOWA AUROGON PL 10-50X



SPHERICAL LENSES SUPER 35 – PL MOUNT – CANON

TELEPHOTO

Canon 200 mm T2.3

Canon 300 mm 2.8

Canon 400 mm T2.8

Canon 600 mm T5.6

Canon 800 mm T5.6

Zoom Canon 150-600 T5.6

SPHERICAL LENSES – PL MOUNT

SPECIAL LENSES



CENTURY WIDE ANGLE PRISM

OPTIMO



ANGENIEUX OPTIMO

28-340 mm T3.2



ANGENIEUX OPTIMO STYLE

25-250 mm T3.5

OPTIMO



ANGENIEUX OPTIMO

24-290 mm T2.8



ANGENIEUX OPTIMO

19.5-94 mm T2.6

OPTIMO



ANGENIEUX OPTIMO

17-80 mm T2.2



ANGENIEUX OPTIMO LIGHTWEIGHT

45-120 mm T2.8



ANGENIEUX OPTIMO LIGHTWEIGHT

28-76 mm T2.6



ANGENIEUX OPTIMO LIGHTWEIGHT

15-40 mm T2.6

CN-E



CANON CN-E
15.5-47 mm T2.8



CANON CN-E
30-105 mm T2.8

SPHERICAL ZOOM SUPER 35 – PL MOUNT – CANON

CN7x17 / CN-E



CANON CN7X17 KAS S CINE SERVO
17-120 mm T2.95



CANON CN-E
30-300 mm T2.95/T3.7

SPHERICAL ZOOM SUPER 35 – PL MOUNT – FUJINON

CABRIO PREMIERE



FUJINON CABRIO PREMIERE
19-90 mm T2.9



FUJINON CABRIO PREMIERE
85-300 mm T2.9/4.0

ALURA LWZ



ARRI / FUJINON ALURA LWZ

30-80 mm T2.8



ARRI / FUJINON ALURA LWZ

15.5-45 mm T2.8

SIGMA



SIGMA
18-35 mm T2



SIGMA
50-100mm T2

COMPACT ZOOM CZ.2



ZEISS COMPACT ZOOM CZ.2
70-200 mm T2.9



COMPACT ZOOM CZ.2
28-80 mm T2.9



COMPACT ZOOM CZ.2
15-30 mm T2.9

SPHERICAL ZOOM SUPER 35 – PL/EF MOUNT – TOKINA

TOKINA 11-20 MM T2.9



SPHERICAL ZOOM SUPER 35 – PL MOUNT

ANGENIEUX



ANGENIEUX
25-250 mm HR T3.5



ANGENIEUX
17-102 mm T2.9

VAROTAL MK II



COOKE VAROTAL MK II
25-250 mm T4



COOKE VAROTAL MK II
18-100 mm T3



COOKE VAROTAL MK II
20-100 mm T3.1

ADAPTORS



TLS PL 2X
Extender Adaptor



TLS PL 1.4X
Extender Adaptor



CENTURY PL 2X
Optics Extender



CENTURY PL 1.4X
Optics Extender

LENSES SUPER 16

ZEISS ULTRA S.16

• 6 - 8 - 9.5 - 12 - 14 - T1.3

ZEISS ULTRASPEED S.16

• 9.5 - 12 - 16 - 25 - 50 - T1.3

ARVIC S.16

• 9.5 - 12 - 16 - 25 - 35 - 50 - T1.3

Zoom Angenieux 7-81 mm T2.4

Zoom Angenieux 11.5-138 mm T2.3

Zoom Zeiss 11-110 mm T2.2

Zoom Zeiss 12-120 mm T2.3

Arvic 7 mm T1.3

Arvic 8 mm T1.3

Elite 4.5 mm T2.2

Optex 4 mm T2

COMPACT PRIME



ZEISS COMPACT PRIME CP.3 PL/EF

- 18 T2.9 – 25 T2.1 – 35 T2.1
50 T2.1 – 100 T2.1

15 mm T2.9 PL/EF

21 mm T2.9 PL/EF

28 mm T2.1 PL/EF

85 mm T2.1 PL/EF

135 mm T2.1 PL/EF



ZEISS COMPACT PRIME CP.2 PL/EF

- 18 T3.6 – 25 T2.9 – 35 T2.1
50 T2.1 – 85 T2.1 – 100 T2.1

15 mm T2.9 PL/EF

21 mm T2.9 PL/EF

28 mm T2.1 PL/EF

135 mm T2.1 PL/EF

50 mm T2.1 Macro PL/EF

LENSES EF MOUNT

CANON PRIME CN-E

• 14 T3.1 – 20 T1.5 – 24 T1.5 – 35 T1.5 – 50 T1.3 – 85 T1.3 – 135 T2.2

CANON USM SERIES L

• 14 F2.8 – 24 F1.4 – 35 F1.4 – 50 F1.2 – 85 F1.4 – 135 F1.4

Zeiss Macro 50 mm T2 Milvus

Zeiss Macro 100 mm T2 Milvus

Canon Macro EF 100 mm T2.8

Canon Extender EF 2x II

Zoom Canon EF 4K UHD 11x T4.3

Zoom Canon EF 16-35 mm F2.8

Zoom Canon EF 24-105 mm F4 Is

Zoom Canon EF 24-70 mm F2.8

Zoom Canon EF 70-200 mm F2.8

Zoom Canon EF 70-200 mm Is F2.8

Zoom Canon EF 10-22 mm F3.5/4.5

Zoom Canon EF 17-55 mm F2.8 IS

Canon TS-E 17 mm F4.0 L USM

Canon TS-E 24 mm F3.5 II L USM

Canon TS-E 50 mm F2.8 L Macro

Canon TS-E 90 mm F2.8 L Macro

SPHERICAL LENSES – E MOUNT

LENSES E MOUNT

SONY G-MASTER

• 14 T1.8 – 24 T 1.4 – 35 T1.4 – 85 T1.4 – 100 T2.8 T5.6 – 135 T1.8

Zoom Sony FE 12-24 T2.8 GM

Zoom Sony FE 16-35 mm T2.8 GM

Zoom Sony FE 24-70 mm T2.8 GM

Zoom Sony FE 70-200 mm T2.8 GM

Zoom Sony Zeiss 16-35 mm F4

Zoom Sony FE PZ 28-135 mm F4 G

SPHERICAL LENSES – RF MOUNT

LENSES RF MOUNT

Laowa Zero Distortion 9 mm F2.8

Canon RF 15-35MM F2.8L IS USM

Canon EF 24-70MM F/2.8L II USM

SPHERICAL LENSES – MFT MOUNT

LENSES MFT MOUNT

Olympus M.Zuiko Dgital ED 7-14 mm 1:2.8 PRO

Lumix G Fisheye 8 mm F3.5

Lumix G 14 mm F2.5 ASPH

Lumix G Vario 7-14 mm F4 ASPH

Lumix G Vario 12-32 mm F3.5-5.6 OIS

Lumix G X 12-35 mm F2.8

Lumix G Vario 14-140 mm F3.5-5.6 ASPH OIS

Lumix G X 35-100 mm F2.8

SPHERICAL LENSES – B4 MOUNT

LENSES B4 MOUNT

ZEISS DIGI PRIME T1.9

• 5 – 7 – 10 – 14 – 20 – 28 – 40 – 70

CANON HD-EC T1.5

• 5 – 9 – 14 – 24 – 35 – 55

SPHERICAL ZOOM LENSES – B4 MOUNT

ZOOM B4 MOUNT

Zoom Canon 4K 12x 4.3 CJ12ex4.3B IASE

Zoom Canon HD 24x7,5 HD XS

Zoom Canon HD 9x5.5

Zoom Canon HD 11x4.7

Zoom Canon HD 21x7.5

Zoom Canon HD 21x7.5 Cine Style

Zoom Fujinon HD 13x4.5

Zoom Fujinon HD 22x7.8

Optex HDEC Macro 120 mm

Zoom Canon 33x14.5 mm

Zoom Canon HD 40x10 mm Stabil

CAMERA ACCESSORIES

121



CINEFADE VARIND

DATASHEET

Cinéfade effect

- Vary depth of field in one shot at constant exposure
- Works with any camera and cinelens

VariND mode

- Neutral density range from ND.4 to ND1.9+
- Remotely and dynamically controllable VariND whenever the camera is inaccessible
- Directly adjustable in 1/3 stop increments without hand unit
- Two high quality ARRI polarising filters

RotaPola mode

- Removable Static Polariser to separately control the Motorised Polariser
- Remotely and dynamically adjustable polarisation angle to control reflection



GIMBAL – DJI
RONIN 2

DATASHEET

Axes	3 Axes gyro stabilized
Movements	PAN 360° TILT ±135° ROLL ±220°
Payload	13,6 kg
Weight	w handle 6,4 kg w/o handle 5,0 kg
Dimension [WxDxH]	w handle 630 x 416 x 720 mm w/o handle 350 x 416 x 530 mm
Optional	DJI Master wheels 3 axes DJI Force pro





CAMERA GIMBAL – DJI

RONIN 4D

DATASHEET

Sensor Size	35mm Full-Frame CMOS image sensor
Support Lens	DL Mount and E Mount
Focus Control	Autofocus, Manual Focus, Automated Manual Focus
Recording Format	Apple ProRes 422 HHQ, Apple ProRes 422 H.264 (4:2:0 10-bit)
CFexpress 2.0 Type B Recording Format	ProRes 422 HQ: 6k: 23.976/24/25/29.97/30fps C4K: 23.976 to 120fps 2K: 23.976 to 120fps
	H.264: C4K: 23.976 to 120 fps 2K: 23.976 to 120 fps
Mechanical Range	Pan: $\pm 330^\circ$ Tilt: -75° to 175° Roll: -90° to 230° Z-Axis Range: approx 130mm:
Optional	DJI Master wheels 3 axes, DJI Force pro



GIMBAL – DJI

RONIN

DATASHEET

Axes	3 Axes gyro stabilized
Movements	PAN 360° TILT +45° to -120° ROLL ± 25°
Operation	Underslung Upright Briefcase
Payload	7,25 kg
Weight	4,20 kg
Dimension [WxDxH]	620 x280-380x500mm



GIMBAL – FREEFLY
MOVI 15

DATASHEET

Axes	3 Axes gyro stabilized
Movements	PAN 360° TILT ± 180° ROLL ± 180°
Payload	6,8 kg
Weight	2,47 kg
Dimension [WxDxH]	203 x 203 x 197 mm



GIMBAL – FREEFLY
MOVI 10

DATASHEET

Axes	3 Axes gyro stabilized
Movements	PAN 360° TILT ± 180° ROLL ± 180°
Payload	5,4 kg
Weight	1.5 kg
Dimension [WxDxH]	200 x 140 x 200 mm

RONIN RS 3 PRO COMBO / RONIN RS 2 / RONIN S / RONIN SC



DJI RONIN RS 3

Movements

PAN 360°/s
TILT 360°/s
ROLL 360°/s

Payload

4,5 kg



DJI RONIN RS 2

Movements

PAN 360° Continuous
TILT -112° a +214°
ROLL -95° a +240°

Payload

4,5 kg



DJI RONIN S

Movements

PAN 360° Continuous
TILT +205° a -115°
ROLL +230° a -90°

Payload

3,6 kg

DJI RONIN SC

BODIES

Easyrig Stabil G2

Easyrig Vario 5

Easyrig Cinema 3

Easyrig Cinema 2.5

Easyrig Minimax

Tilta Max Armor Man 3

Flowcine Gravity One



Ergorig



HEADS



ARRIHEAD



OCONNOR 2575



OCONNOR 2560



OCONNOR 2060HD



SACHTLER VIDEO 60 [9+9]



CARTONI C40



CARTONI MAXIMA



CARTONI MAXIMA 30



CARTONI MASTER MK II



CARTONI SIGMA



SACHTLER VIDEO 30 [7+7]

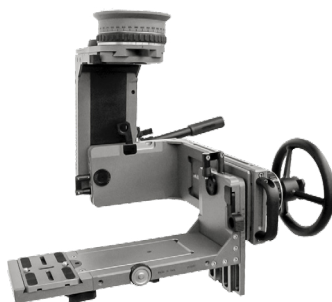


OCONNOR 1040

HEADS



CARTONI LAMBDA 25 - 3 AXES



CARTONI LAMBDA - 3 AXES



CARTONI SPINHEAD



RONFORD7 MK IV



CARTONI TOTAL DUTCH



AIR FLOATER

HEADS / GRIP

Bazooka Elemack

Tall Leg Bowl / Mitchell

Baby Leg Bowl / Mitchell

Hi- Hat Ronford Bowl / Mitchell

Steady-bag

La Bouèe

Rain cover Alexa

Rain cover Arri 435/535

Cartoni C20 Head

Swing Head [Tango]

Swing Head [Bogie]

Dutch Head C40

Mitchell 3-Way Leveller

Spider Base Plate Movie Grip

Cheeseplate

ELECTRONIC



ARRI HI-5 HAND UNIT
With Zoom – Focus – Iris



ARRI RIA-1
Radio Interface Adapter



ARRI ZMU-4
Zoom Main Unit



FOCUSBUG
Cine RT System



ARRI CCM-1
Camera Control Unit



ARRI MASTER GRIP
Ultimate handheld control

ELECTRONIC



**PRESTON WIRELESS
CONTROL SET F.I.Z**



**PRESTON MICRO FORCE
V+F2 ZOOM WIRELESS CONTROL**



PRESTON SINGLE CHANNEL F+I



RT MOTION WIRELESS F.I.Z

Arri Wireless Control Unit WCU-4 with Zoom - Focus - Iris

Arri ZMU-3 Zoom Main Unit

Arri Wireless Control Unit WCU-3 with Zoom - Focus - Iris

Arri Wireless Single Axis Unit Sxu-1

Chrosziel Wireless Control Magnum

Tilta Nucleus-M

Wireless Focus Control Digi Fox

Wireless Focus Control Mag Fox

ELECTRONIC



**ARRI CAMERA CONTROL PANNEL
CCP-1 ALEXA MINI/AMIRA**



**ARRI ULTRASONIC DISTANCE
MEASURE UDM**



**ARRI REMOTE ALEXA
CONTROL UNIT RCU-4**



RAIN DEFLECTOR SCHULTZ

- SPRAY-OFF MINI 6X6
- SPRAY-OFF MILLY 4X5.65
- SPRAY-OFF MICRO 4X5.65

Rain Deflector FGV 6X6

Rain deflector Spintec 4X4

Director viewfinder Mitchell 35 mm

Director viewfinder movie camera support 35 mm

Director viewfinder Kish S.35 Anamorphic

Director viewfinder Kish 16 mm

Director viewfinder Sigma FP

MATTE BOX / FOLLOW FOCUS

Arri Matte Box 6X6 MB-14

Arri Matte Box 4X5.6 MB-18

Arri Matte Box 4X4 MB-16

Arri Matte Box 4X5.6 MB-19

Arri LMB-25 4X5.65 Clip On

Arri LMB-15 4X5.65 Clip On

Arri LMB-6 6.6X6.6 Clip On

Arri LMB-4 6.6X6.6 Clip On

Arri LMB-3 4X4 Clip On

Arri LMB-1 4X5.65 Clip On

Chrosziel 4X4 MattE -Box

Chrosziel 4X5.65 Clip On

Follow Focus Arri FF-5 HD

Follow Focus Arri FF-4

Follow Focus Arri FF-3

Follow Focus Chrosziel

Follow Focus Arri FF-2

Mini Follow Focus Arri MFF-1

FILTERS / DIOPTRIS

IBE 4x5.65 Aesthetic Filter Impressive [I- II- III - IV - V]

IBE 4x5.65 Aesthetic Filter Bokeh [I -II - III]

IBE 4x5.65 Red Shine - Blue Shine - Golden Fleece

Tiffen 4x5.65 ND IR [3-6-9-1.2-1.5] set of 5 filters

Tiffen 4x5.65 ND IR 1.8

Tiffen 4x5.65 ND IR 2.1

Tiffen 4x5.65 Hot Mirror

Tiffen 4x5.65 T1 IR

Arri FSND 4x5.65 ND [3-6-9-1.2-1.5]

Arri FSND 4x5.65 True ND 1.8

Arri FSND 4x5.65 True ND 2.1

Arri FSND 4x5.65 True ND 2.4

Arri FSND 6.6x6.6 ND [3-6-9-1.2-1.5]

Arri FSND 6.6x6.6 True ND 1.8

Arri FSND 6.6x6.6 True ND 2.1

Arri FSND 6.6x6.6 True ND 2.4

Schneider 4x5.65 TruE -Cut 750/680

Schneider 4x5.65 Platinum IR [3-6-9-1.2-1.5]

Schneider 4x5.65 Platinum ND IR 1.8

Schneider 4x5.65 Platinum ND IR 2.1

Mitomo 4x5.65 True ND [3-6-9-1.2-1.5]

Mitomo 4x5.65 True ND 1.8

Mitomo 4x5.65 True ND 2.1

FILTERS / DIOPTERS

Vantage True Pola frame 4x5,65

Gecko-Cam pola frame 4x5,6

Tiffen 6.6x6.6 ND IR [3-6-9-1.2-1.5] Set 5 Filters

Tiffen 6.6x6.6 ND IR 1.8

Tiffen 6.6x6.6 ND IR 2.1

Tiffen 6.6x6.6 hot mirror

Tiffen 6.6x6.6 T1/2 IR

Schneider 6.6x6.6 TruE -Cut 750/680

Tiffen True -Streak blue 6.6x6.6 [1-2-3-4 mm]

Tiffen round Dioptres set [114 mm]

Round Dioptres Set 77 mm

Tiffen round Dioptres Set [138 mm]

Round Dioptres set for ANG. HR / 24-290

Flarestick Steel-Edition

Tiffen Split round Dioptres Set [138 mm]

CARTS

Magliner Senior

Magliner Junior

Kartmaster



CAMERA ACCESSORIES – NAUTICAM / AMPHIBICO

UNDERWATER



NAUTICAM

Camera	Arri Alexa Mini LF Arri Alexa Mini
Deep	80 m
Weight	14 kg
Dimension	363 x 341 x 290 mm



AMPHIBICO ROUGE

Camera	Red Epic
Deep	100 m
Dimension	375 x 356 x 248 mm

UNDERWATER



SCUBACAM

Camera	Arri Alexa Mini
Deep	4 m
Weight	3,5 kg
Dimension	500 x 300 x 250 mm



AMPHIBICO PHENOM

Camera	Canon ME200-SH
Deep	100 m
Weight	16,3 kg
Dimension	465 x 345 x 257 mm



EASYDIVE LEO3 WI

Camera	Sony Alpha 7 sIII
Deep	150 m



EWA MARINE U-A

Camera	All SRL Camera
Deep	Up to 20m

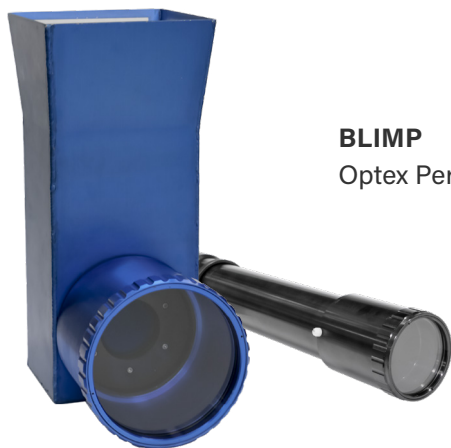
UNDERWATER EQUIPMENT



INTERSPIRO DIVATOR



LUBELL LAB'S
Speakers



BLIMP
Optex Periscope and Boroscope

VIDEO

142

MONITOR



TV LOGIC XWM 175W 17"



TRANSVIDEO CINEMONITOR HD 15"



ASTRO DM-3105 5"



ASTRO WM-3014 6"

MONITOR

Monitor Transvideo Starlight Oled 5"

Monitor TV-Logic VFM-056W 5,6"

Monitor TV-Logic VFM-058W

Monitor TV-Logic Oled VFM-055A - HDSDI / HDMI 5.5"

Monitor SmallHD 503 5"

Monitor SmallHD 703 Ultra Bright 7"

Monitor SmallHD Focus Bolt Sidekick 5"

Monitor TV-Logic F7-H 7"

Monitor Wireless SmallHD 703 Bolt

Monitor TV-Logic LVM-074 7"

Monitor Marshall V-LCD 70xp 7" HD-SDI

Monitor Marshall V-LCD 70xhb 7" HDMI Con HD-SDI Conversion

Monitor Marshall V-LCD70XP 7" HDMI

Monitor Panasonic BT-LH80WE LCD HD 8"

Monitor Panasonic BT-LH910WE LCD HD 9"

Monitor Sony PVM-740 Oled 7,4"

Monitor Tv-Logic LVM-095W HD 9"

Monitor Tv-Logic LVM-173W-3G HD 17"

Monitor Sony PVM-1741 Oled 17"

Monitor Bon BXM-183R3G 18"

Monitor Panasonic BT-LH1760/1710 17"

Monitor Panasonic LCD Bt-LH1850E 18"

MONITOR

Monitor Panasonic LCD Bt-LH2170 21,5"

Monitor TV-Logic LVM-242W 24"

Monitor TV-Logic LVM-247W HD 24"

Monitor Sony LCD LDM-2450 24"

Monitor Panasonic BT-LH2550E 25"

Monitor Panasonic BT-3DL2550 25"

Monitor Panasonic BT-LH2600WE 26"

Monitor Panasonic TH-42PWD7UY 42" Plasma

Monitor Samsung 3D 46"

VIDEO ACCESSORIES – OVIDE / VANTAGE / VIDEO DEVICE
RECORDERS



**OVIDE QTAKE
SMART ASSIST 4 EVO / 2 EVO**



OVIDE KOKO



VANTAGE PSU-3 HD



SOUND DEVICE PIX240I



ATOMOS SUMO 19SE



ATOMOS SHOGUN 7

VIDEO ACCESSORIES – ODYSSEY / AJA / ATOMOS / TERADEK

RECORDERS / STREAMING

Odyssey 7Q

Aja Ki Pro Quad

Black Magic Video Assist 4k

Aja Ki Pro

Aja Mini Ki Pro

Nano Flash Recorder

Atomos Ninja V Pro

Atomos Shogun Inferno

Atomos Samurai Blade

Panasonic AG-HPG20E

Panasonic AJ-HPM110E

Panasonic AG-HPD24

Panasonic AG-HMR10



**TERADEK VIDIU GO
STREAMING SYSTEM**



**TERADEK BOND II
STREAMING SYSTEM**



**BLACKMAGIC WEB PRESENTER
STREAMING SYSTEM**

TRANSMITTERS



COBHAM 1000 HD-SDI
COBHAM 500 HD-SDI



TERADEK BOLT 1500 4K



TERADEK BOLT 703



TERADEK SERV PRO + LINK

Teradek Bolt 750 4K

Teradek Bolt Pro 300

Teradek Bolt 1500 4K

Teradek Bolt Pro 500

Teradek Bolt INDIE 7

Teradek Bolt Pro 600

Teradek Bolt 702 TOUCH

Teradek Bolt Pro 1000

Teradek Bolt CINE 7 4K

Teradek Bolt Pro 2000

Teradek Antenna Array

Teradek Bolt Pro 3000

TRANSMITTERS

Boxx Meridian HD–SDI Transmitter

Wevi CW–5HD HD–SDI Transmitter

Paralinx Arrow + HD–SDI/HDMI Transmitter

Panasonic AV–HS410E Mixer HD

Panasonic AV–HS450 Mixer HD

Panasonic AW–HS50 Mixer HD

Aja 3GDA SDI Distributor HD

Aja HD10MD3 down converter

Sony UP–890 video printer Black & White

Panasonic AG–HMR10

ON SALES

CONSUMABLES

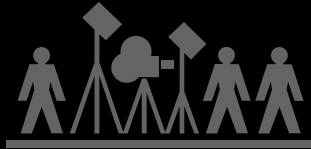
GAFFER TAPE

GAFFER TAPE FLUO

VELCRO

KENRO KENAIR AIR DUSTER

EYE CUSHION



MOVIE PEOPLE

Via Carlo Porta 3
20093 Cologno Monzese MI Italia
+39 02 25 39 931 - camera@moviepeople.it
www.moviepeople.it

